

**love**  
planet  
earth

**2020**



## MAN AND NATURE

a relationship of opportunity and continuous challenge

Mankind has always perceived Nature as the main source of survival and evolution and also, at the same time, as an irrational, fascinating and destructive power.

Man's opportunity to take advantage of nature to obtain food, resources and tools has always been in contrast with the risk of impoverishing it and upsetting its balance.

Today, technology offers new methods to favour coexistence between mankind and nature, reconciling man with the environment he belongs to.

Nature is both origin and opportunity and  
*"there is a great deal of human nature in people".*  
Mark Twain

[www.e-geos.it](http://www.e-geos.it)

# love planet earth



**e-geos**  
AN ASI / TELESPAZIO COMPANY



# FOR EACH COPY OF THIS CALENDAR A TREE HAS BEEN PLANTED



## The Project

Sai, Village, Maharashtra, India

Project Purpose: Trees for Water

## Location

Plantation of local tree species on the Panchayat owned lands near the water embankments of Sai village, Raigad district, Maharashtra, India



## Aim

- To augment water catchment, improve groundwater recharge and reduce flooding;
- To improve tree cover on the uplands to reduce the effects of soil erosion and run off of water;
- To improve wildlife habitat for locally endangered bird species and other wildlife prominent in the region;
- To provide empowerment to tribal communities along with fruits, fodder and non timber forest produce.

For the printing of Love Planet Earth 2020 calendar **we have taken into account its ecological impact.**

All materials used comply with environmental regulations.

- Paper is FSC (*Forest Stewardship Council*) certified;
- Pages have not been coated with plastic to allow their full recycling;
- We have selected a spiral design that has allowed us to save 1 km of metal;
- The calendar is associated with a TreeNation praoject, thanks to which 6,500 trees were planted in an area of India;
- The idea of turning each month of the year into a postcard aims at reusing this object and not making it "waste" after only 1 year.











## JANUARY 2020

M	T	W	T	F	S	S
		1	2	3	4	5
6	7	8	9	10	11	12
13	14	15	16	17	18	19
20	21	22	23	24	25	26
27	28	29	30	31		

Val Formazza, Italy

Aerial Image, CGR / e-GEOS production © e-GEOS

Processed and distributed by e-GEOS





love  
planet  
earth

e-geos  
AN ASI / TELESPIAZIO COMPANY

Val Formazza, on the border between Italy and Switzerland, is an example of how nature has become a resource; in fact, the valley hosts many catch basins created during the first decades of the 20th century to produce hydroelectric power.

**Val Formazza, Italy**

Aerial Image, CGR / e-GEOS production © e-GEOS

Processed and distributed by e-GEOS





## FEBRUARY 2020

M	T	W	T	F	S	S
					1	2
3	4	5	6	7	8	9
10	11	12	13	14	15	16
17	18	19	20	21	22	23
24	25	26	27	28	29	

Lanzarote Island, Canary Islands

Pleiades image © CNES 2017

Distribution AIRBUS DS, processed by e-GEOS





love  
planet  
earth

e-geos  
AN ASI / TELESPAZIO COMPANY

Growing vines in Lanzarote, despite the endemic shortage of rain and the proximity to Africa, is a miracle that is only made possible by the relentless efforts of a few wine growers and the beneficial action of trade winds, which carry the humidity of the Atlantic. Vines are planted in large pits dug in the volcanic earth and sheltered from the wind by lava stone walls.

**Lanzarote Island, Canary Islands**

Pleiades image © CNES 2017

Distribution AIRBUS DS, processed by e-GEOS





# MARCH 2020

M	T	W	T	F	S	S
						1
2	3	4	5	6	7	8
9	10	11	12	13	14	15
16	17	18	19	20	21	22
23	24	25	26	27	28	29
30	31					

Northeast Passage, Arctic  
Sentinel-1 image © ESA  
Processed by e-GEOS





love  
planet  
earth

e-geos  
AN ASI / TELESPAZIO COMPANY

Northeast Passage, also called the Northern Sea Route, is the maritime route through the Arctic along the northern coast of the Eurasian landmass, principally situated off the coast of northern Siberia (Russia). This route has always represented a challenge for human sailing.

**Northeast Passage, Arctic**  
Sentinel-1 image © ESA  
Processed by e-GEOS





## APRIL 2020

M	T	W	T	F	S	S
		1	2	3	4	5
6	7	8	9	10	11	12
13	14	15	16	17	18	19
20	21	22	23	24	25	26
27	28	29	30			

Verrazzano-Narrows Bridge, New York City  
COSMO-SkyMed Image © ASI  
Processed and distributed by e-GEOS





love  
planet  
earth

e-geos  
AN ASI / TELESPAZIO COMPANY

Verrazzano Bridge is an engineering project that represents an open challenge between man and nature. At the time of its inauguration, which took place in 1964, it was the longest suspension bridge in the world. Given its size, the project had to take into account the Earth's curvature.

**Verrazzano-Narrows Bridge, New York City**

COSMO-SkyMed Image © ASI

Processed and distributed by e-GEOS





## MAY 2020

M	T	W	T	F	S	S
				1	2	3
4	5	6	7	8	9	10
11	12	13	14	15	16	17
18	19	20	21	22	23	24
25	26	27	28	29	30	31

**Flevoland, Netherlands**

Sentinel-1 image © ESA

Processed by e-GEOS





love  
planet  
earth

e-geos  
AN ASI / TELESPAZIO COMPANY

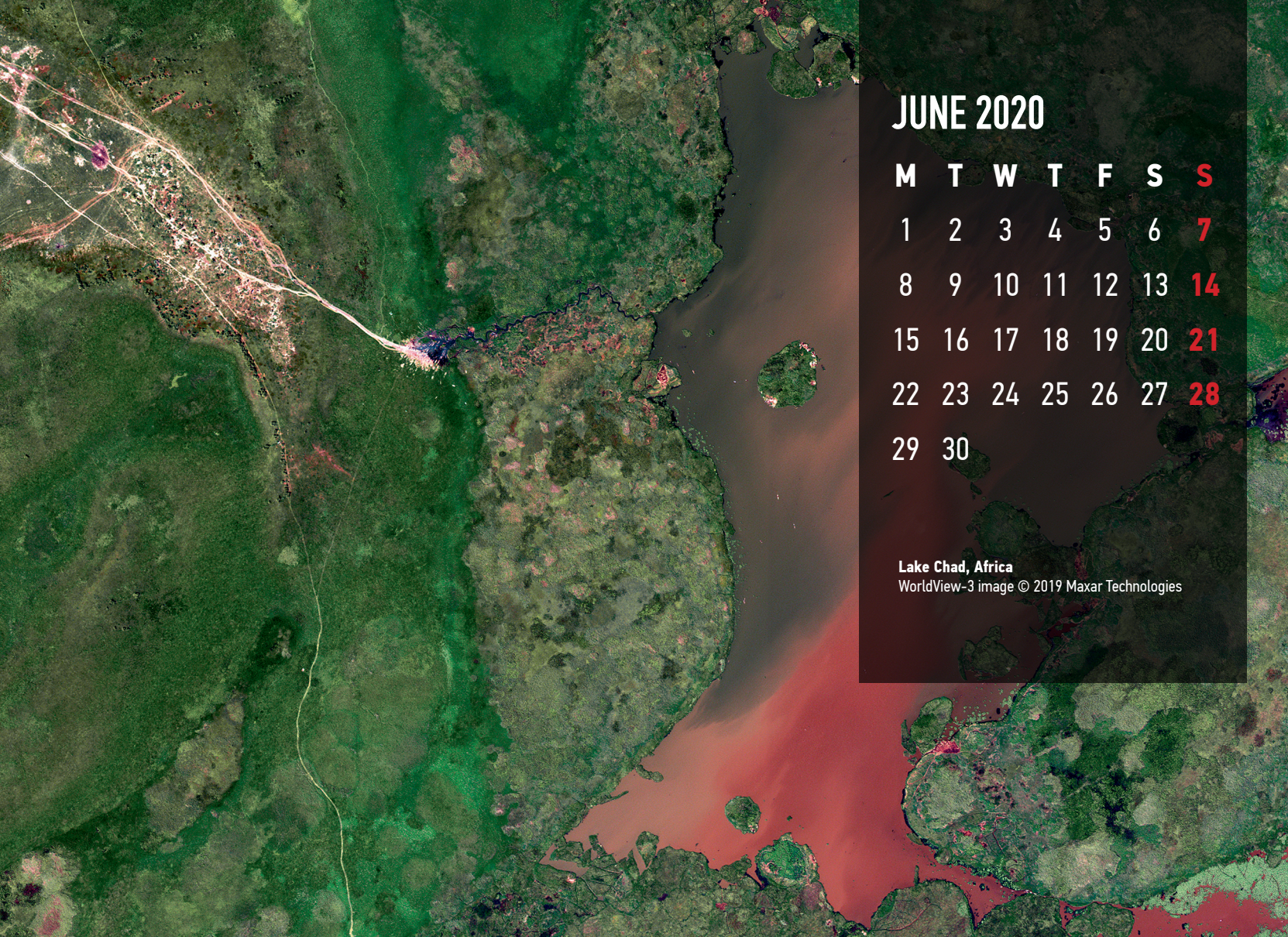
Flevoland, near Amsterdam, represents a stretch of sea artificially dried through dams and water drainage systems. Up until the sixties, the Dutch polder was covered with water; a major land reclamation project gave Holland its twelfth province.

**Flevoland, Netherlands**

Sentinel-1 image © ESA

Processed by e-GEOS





## JUNE 2020

M	T	W	T	F	S	S
1	2	3	4	5	6	7
8	9	10	11	12	13	14
15	16	17	18	19	20	21
22	23	24	25	26	27	28
29	30					

Lake Chad, Africa

WorldView-3 image © 2019 Maxar Technologies





love  
planet  
earth

e-geos  
AN ASI / TELESPAZIO COMPANY

Lake Chad is an endorheic lake in Africa; the image shows the track that man has created to exploit the water course leading to the subsiding river, so as to be still able to draw water and to fish in the lake.

**Lake Chad, Africa**

WorldView-3 image © 2019 Maxar Technologies





## JULY 2020

M	T	W	T	F	S	S
		1	2	3	4	5
6	7	8	9	10	11	12
13	14	15	16	17	18	19
20	21	22	23	24	25	26
27	28	29	30	31		

**The Chinese terraces of Yuanyang**  
COSMO-SkyMed Image © ASI,  
Processed and distributed by e-GEOS





love  
planet  
earth

e-geos  
AN ASI / TELESPAZIO COMPANY

The Chinese terraces of Yuanyang, an UNESCO World Heritage Site, are located in the southern subtropical regions of China. The beautiful terraced hills allow using the steep sides of the mountains to cultivate rice, which only grows well on leveled soil.

**The Chinese terraces of Yuanyang**  
COSMO-SkyMed Image © ASI.  
Processed and distributed by e-GEOS





# AUGUST 2020

M	T	W	T	F	S	S
					1	2
3	4	5	6	7	8	9
10	11	12	13	14	15	16
17	18	19	20	21	22	23
24	25	26	27	28	29	30
31						

Artificial island in the Osaka Bay, Japan  
WorldView-4 image © 2019 Maxar Technologies





love  
planet  
earth

e-geos  
AN ASI / TELESPIAZZO COMPANY

Within the bay area, several artificial earthquake-proof islands have been created over the past decades, some of them by using recycled materials, such as solid waste compressed blocks.

**Artificial island in the Osaka Bay, Japan**  
WorldView-4 image © 2019 Maxar Technologies





## SEPTEMBER 2020

M	T	W	T	F	S	S
	1	2	3	4	5	6
7	8	9	10	11	12	13
14	15	16	17	18	19	20
21	22	23	24	25	26	27
28	29	30				

Pozzuoli submerged archaeological city, Naples  
Aerial image, CGR / e-GEOS production © e-GEOS  
Processed and distributed by e-GEOS





love  
planet  
earth

e-geos  
AN ASI / TELESPAZIO COMPANY

The ruins of the submerged city of Puteoli, today's Pozzuoli, are the remains of submerged suburbs. The coastline, which starts from the port of today's Pozzuoli, was affected by the phenomenon of bradyseism; nature has taken over human life by flooding the structures that today return to the surface.

**Pozzuoli submerged archaeological city, Naples**

Aerial image, CGR / e-GEOS production © e-GEOS

Processed and distributed by e-GEOS





# OCTOBER 2020

M	T	W	T	F	S	S
			1	2	3	4
5	6	7	8	9	10	11
12	13	14	15	16	17	18
19	20	21	22	23	24	25
26	27	28	29	30	31	

El Ejido, Almería province, Spain  
WorldView-3 image © 2019 Maxar Technologies





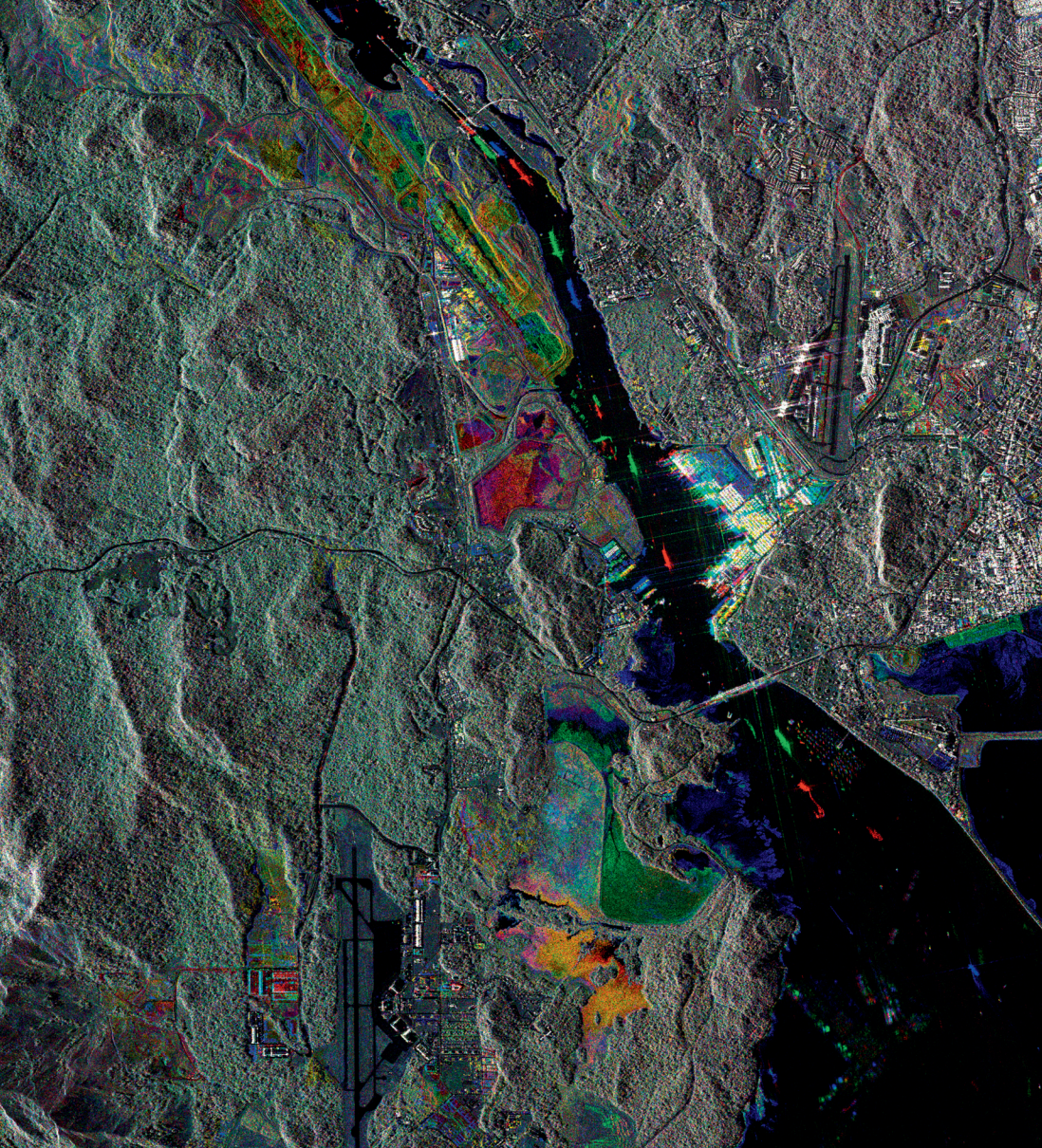
love  
planet  
earth

e-geos  
AN ASI / TELESPIAZZO COMPANY

This region is also known as the "sea of plastic" (Mar de plástico) because of the many greenhouses covering the area. Even though fruit and vegetables are grown using biological pest control, the massive use of plastic makes this area the subject of fierce debates.

**El Ejido, Almería province, Spain**  
WorldView-3 image © 2019 Maxar Technologies





# NOVEMBER 2020

M	T	W	T	F	S	S
						1
2	3	4	5	6	7	8
9	10	11	12	13	14	15
16	17	18	19	20	21	22
23	24	25	26	27	28	29
30						

**Panama Canal, Panamá**  
COSMO-SkyMed Image © ASI  
Processed and distributed by e-GEOS





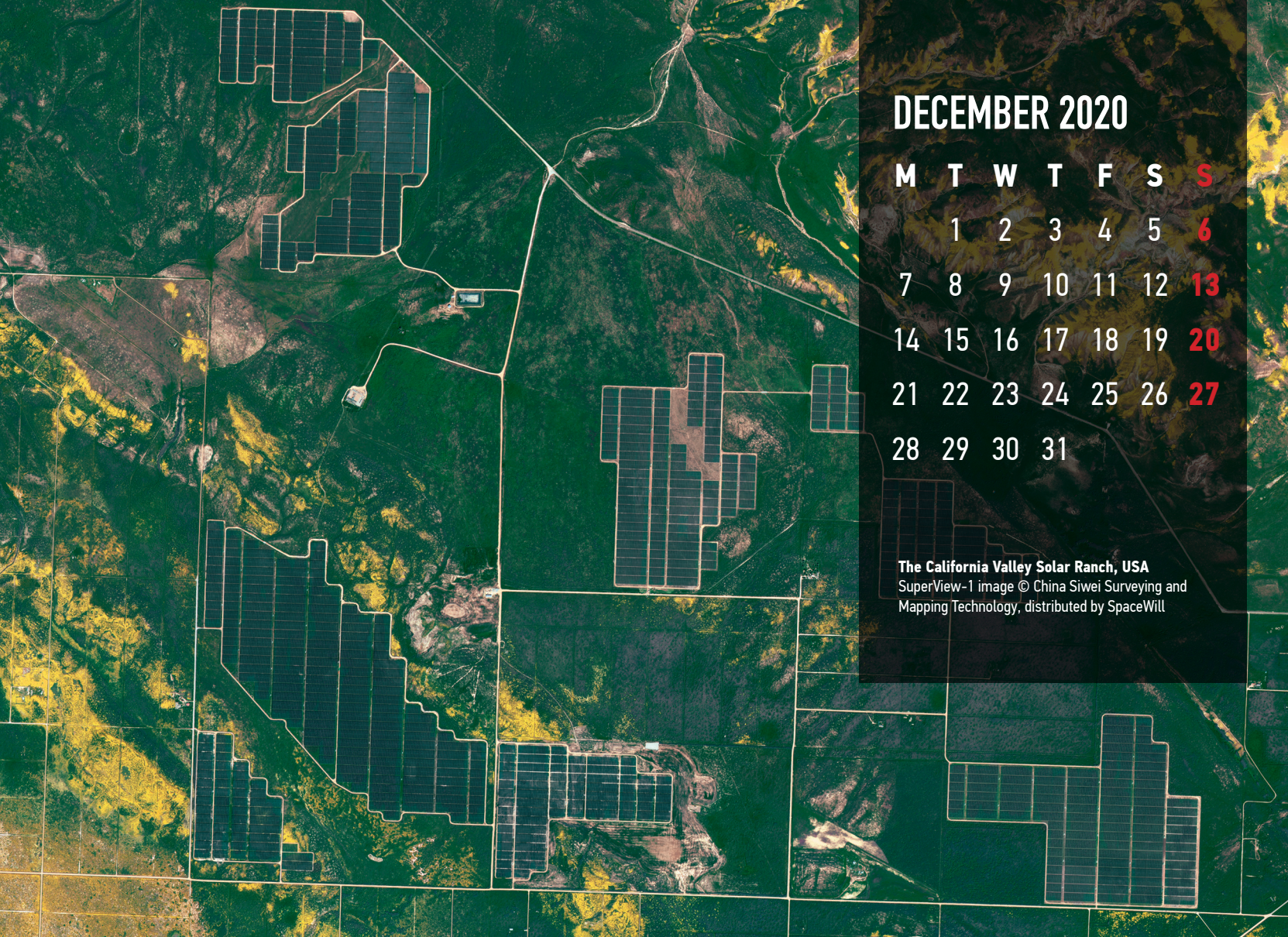
love  
planet  
earth

e-geos  
AN ASI / TELESPIAZIO COMPANY

The Panama Canal connects the Atlantic Ocean to the Pacific Ocean. The expansion of the Panama Canal is an important work of engineering that has doubled its capacity; a system of locks and dams makes it navigable even by large ships, allowing commercial shipping to avoid travelling along longer routes.

**Panama Canal, Panamá**  
COSMO-SkyMed Image © ASI  
Processed and distributed by e-GEOS





## DECEMBER 2020

M	T	W	T	F	S	S
	1	2	3	4	5	6
7	8	9	10	11	12	13
14	15	16	17	18	19	20
21	22	23	24	25	26	27
28	29	30	31			

The California Valley Solar Ranch, USA  
SuperView-1 image © China Siwei Surveying and  
Mapping Technology, distributed by SpaceWill





love  
planet  
earth

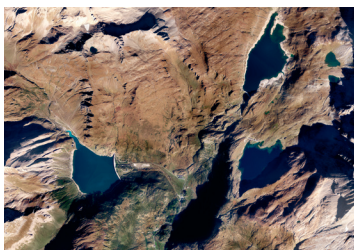
e-geos  
AN ASI / TELESPAZIO COMPANY

The California Valley Solar Ranch is one of the world's largest operating solar photovoltaic power plants. This innovative power-generating project is providing clean and renewable energy for approximately 100,000 homes, helping California to achieve its goal of generating 33 percent of its energy from renewable sources by 2020.

**The California Valley Solar Ranch, USA**

SuperView-1 image © China Siwei Surveying and Mapping Technology, distributed by SpaceWill





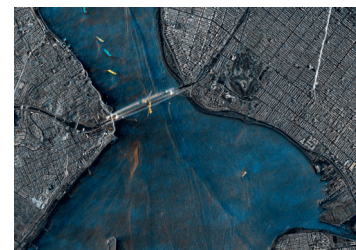
**Val Formazza, Italy.** Aerial Image, CGR / e-GEOS production © e-GEOS, processed and distributed by e-GEOS



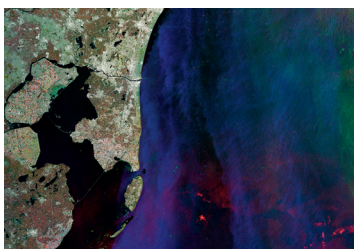
**Lanzarote Island, Canary Islands.** Pleiades image © CNES 2017, Distribution AIRBUS DS, processed by e-GEOS



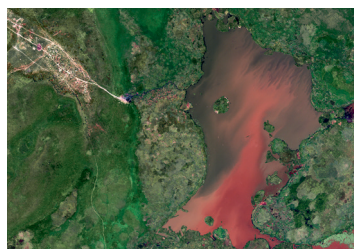
**Northeast Passage, Arctic.** Sentinel-1 image © ESA, processed by e-GEOS



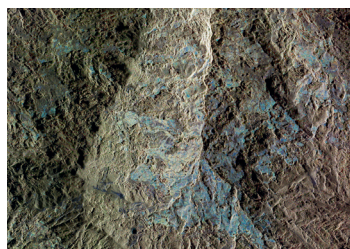
**Verrazzano-Narrows Bridge, New York City.** COSMO-SkyMed Image © ASI, processed and distributed by e-GEOS



**Flevoland, Netherlands.** Sentinel-1 image © ESA, processed by e-GEOS



**Lake Chad, Chad.** Cameroon, Niger, Nigeria. WorldView-3 image © 2019 Maxar Technologies



**The Chinese terraces of Yuanyang.** COSMO-SkyMed Image © ASI, processed and distributed by e-GEOS



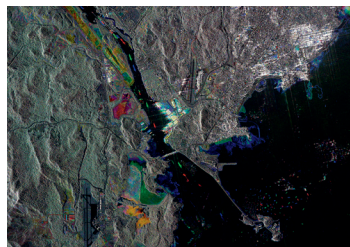
**Artificial island in the Osaka Bay, Japan.** WorldView-4 image © 2019 Maxar Technologies



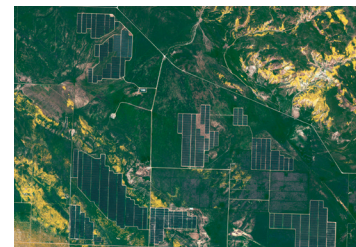
**Pozzuoli submerged archaeological city, Naples.** Aerial image, CGR / e-GEOS production © e-GEOS, processed and distributed by e-GEOS



**El Ejido, Almería province, Spain.** WorldView-3 image © 2019 Maxar Technologies



**Panama Canal, Panamá.** COSMO-SkyMed Image © ASI, processed and distributed by e-GEOS



**The California Valley Solar Ranch, USA.** SuperView-1 image © China Siwei Surveying and Mapping Technology, distributed by SpaceWill